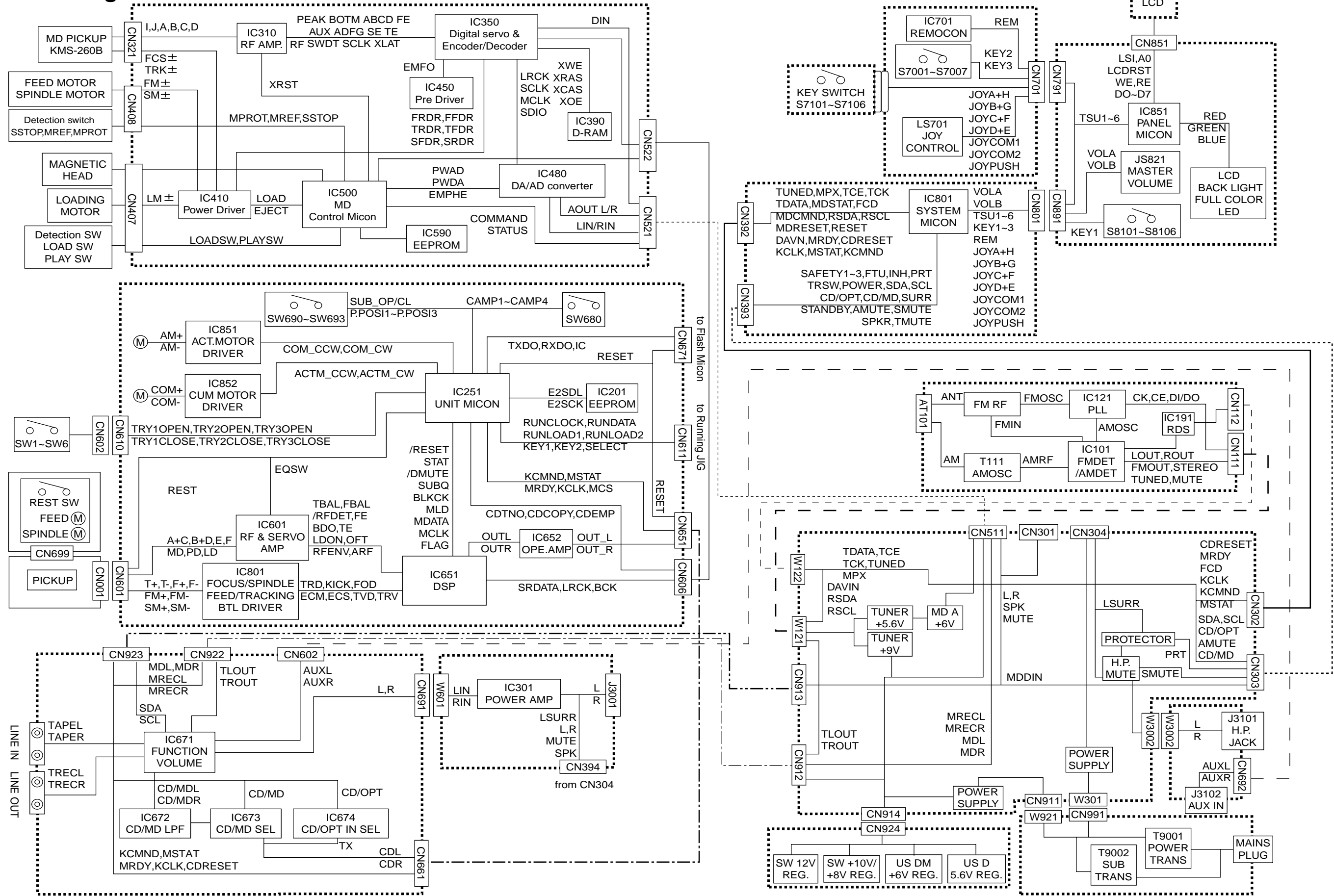
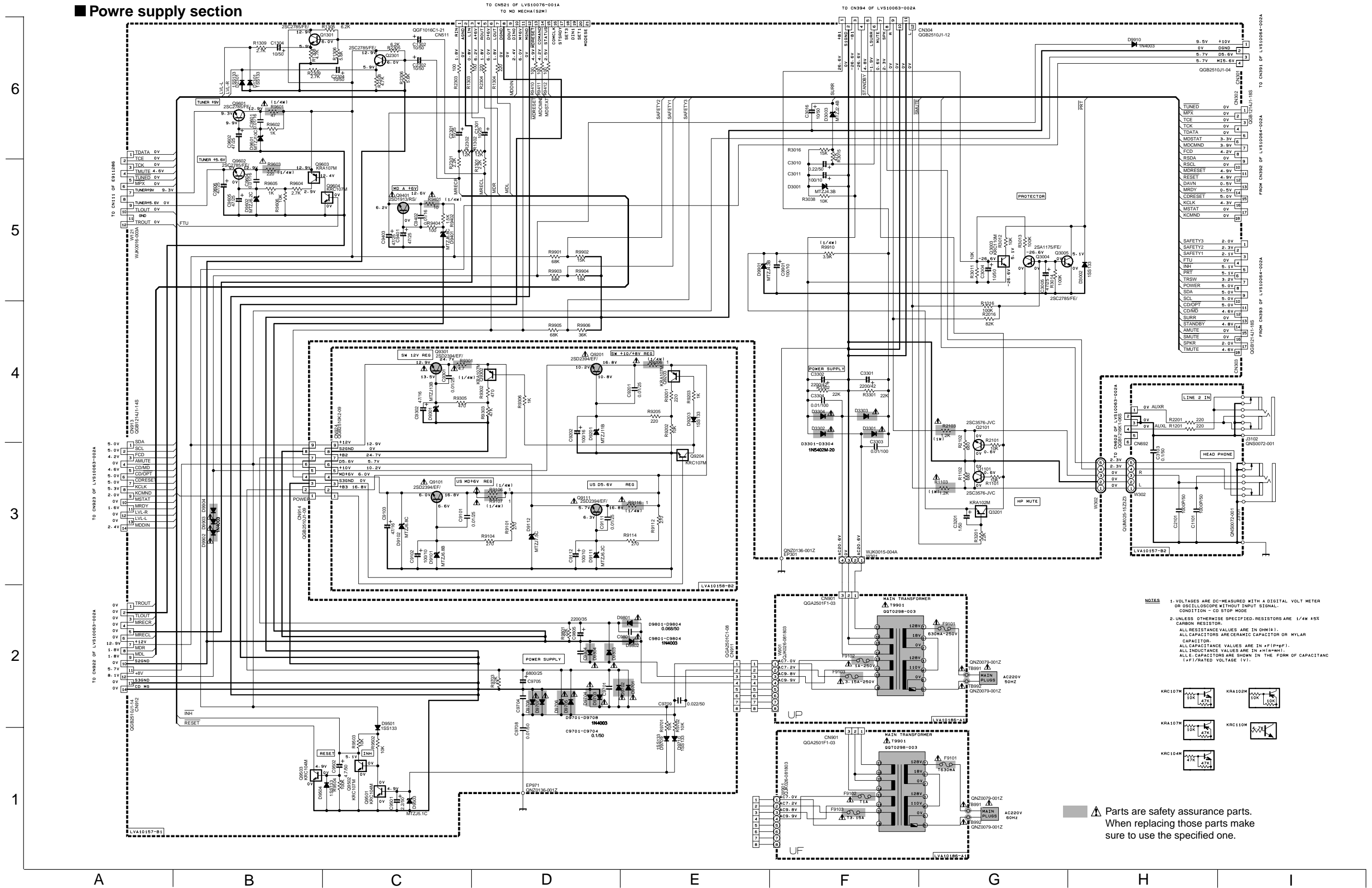


Block diagram

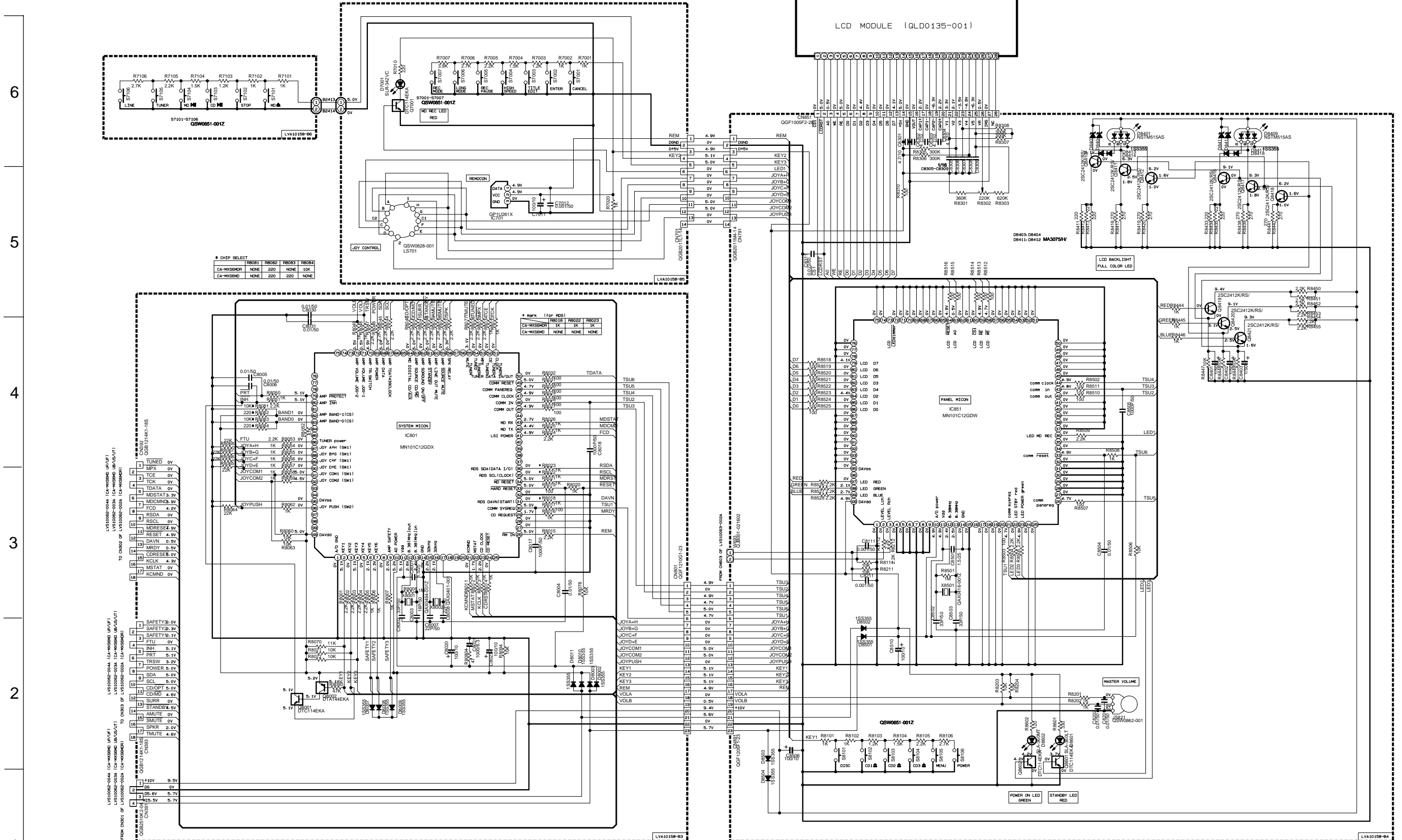


Schematic diagrams

Power supply section



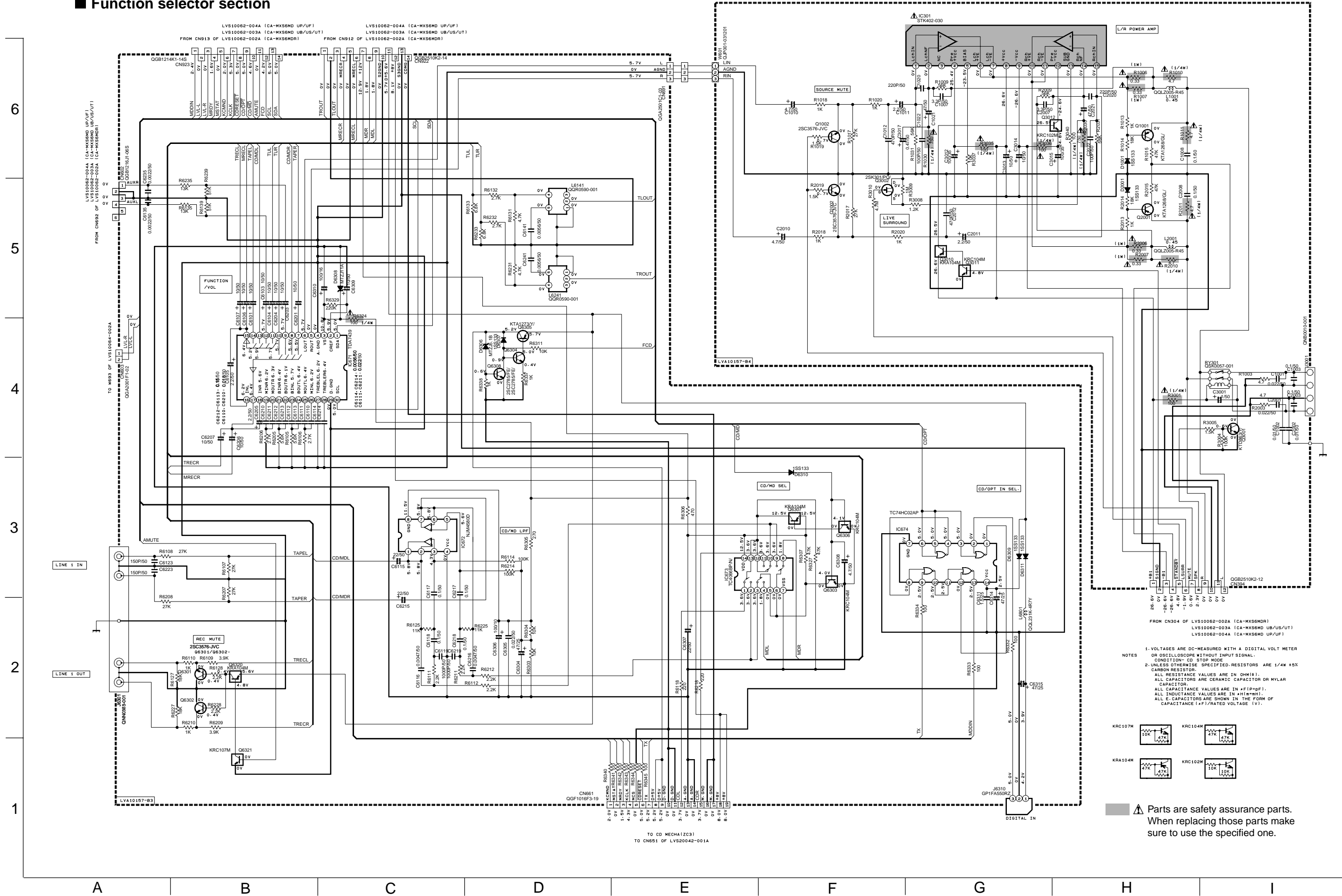
System control section



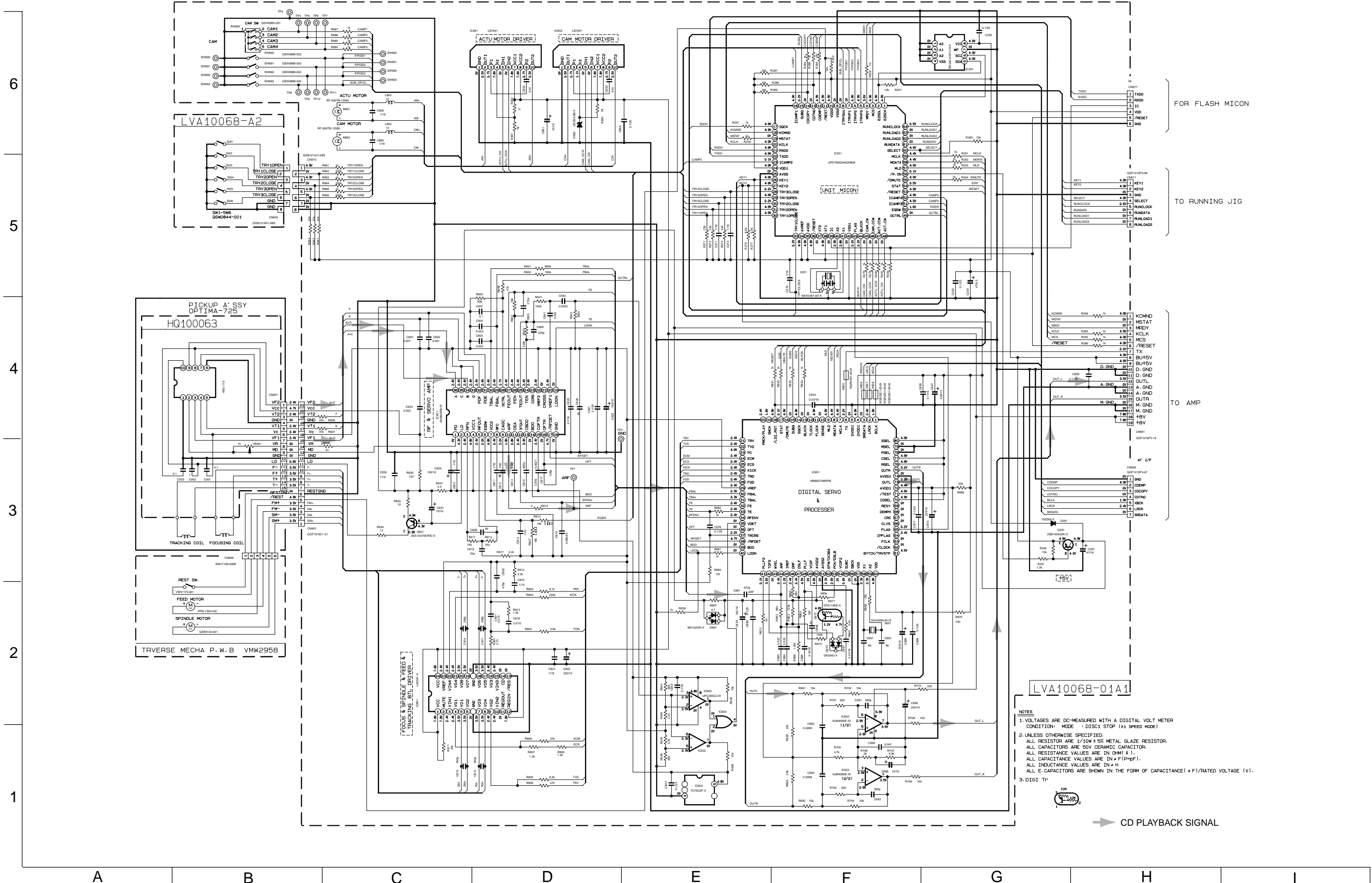
NOTES 1. VOLTAGES ARE DC-MEASURED WITH A DIGITAL VOLT METER OR OSCILLOSCOPE WITHOUT INPUT SIGNAL.
 2. ALL RESISTANCE VALUES ARE IN OHM(Ω). ALL CAPACITORS ARE CERAMIC CAPACITOR OR MYLAR CAPACITOR. ALL CAPACITANCE VALUES ARE IN nF(pF). ALL INDUCTANCE VALUES ARE IN μH(mH). ALL CAPACITORS ARE SHOWN IN THE FORM RESET OF INH CAPACITANCE (nF)/RATED VOLTAGE (V).

MODEL CA-MXS6MD
 CA-MXS6MDR

Function selector section



CD servo control section



FOR FLASH MICON

TO RUNNING JIG

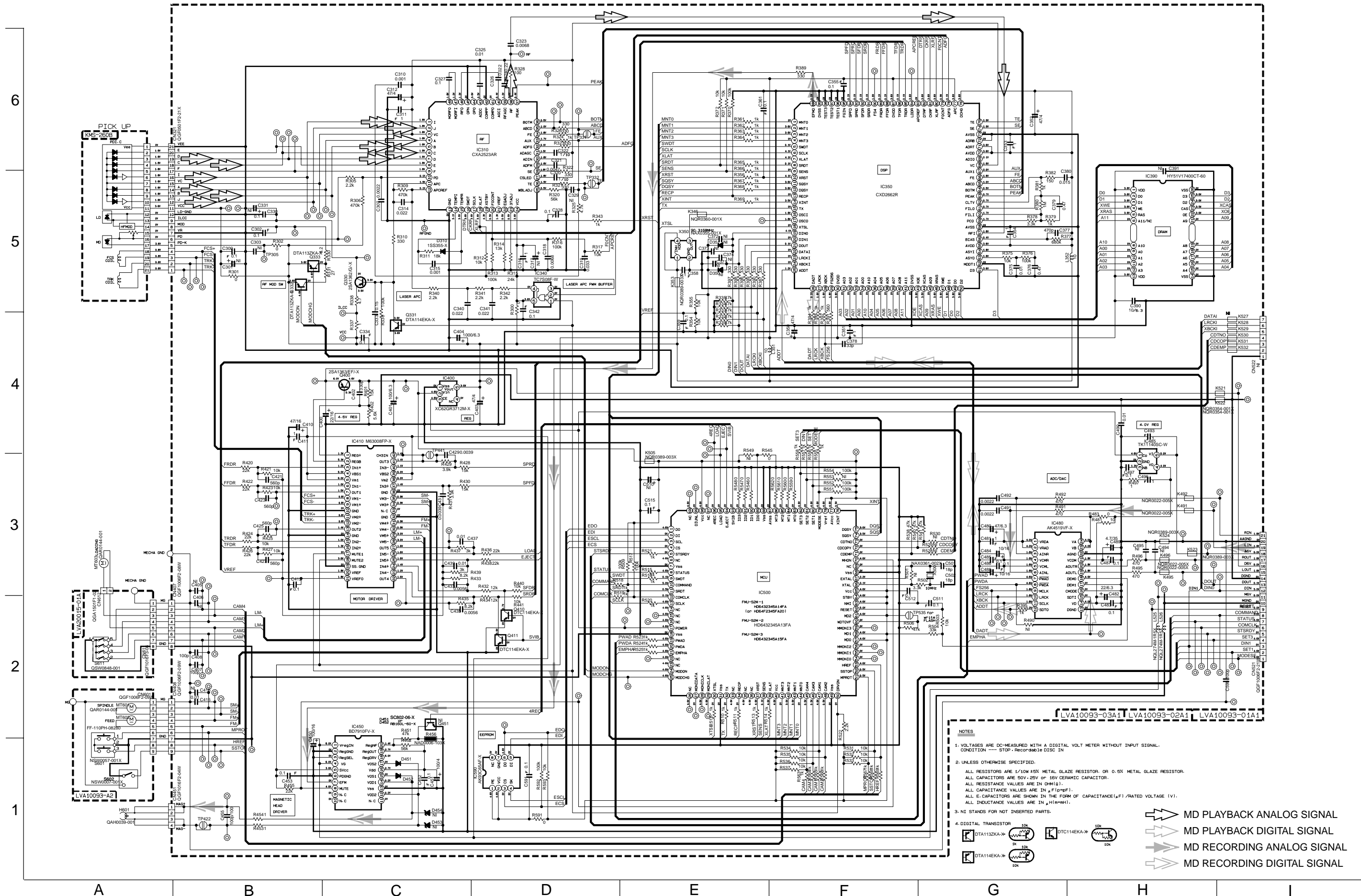
TO AMP

LVA1006B-01A1

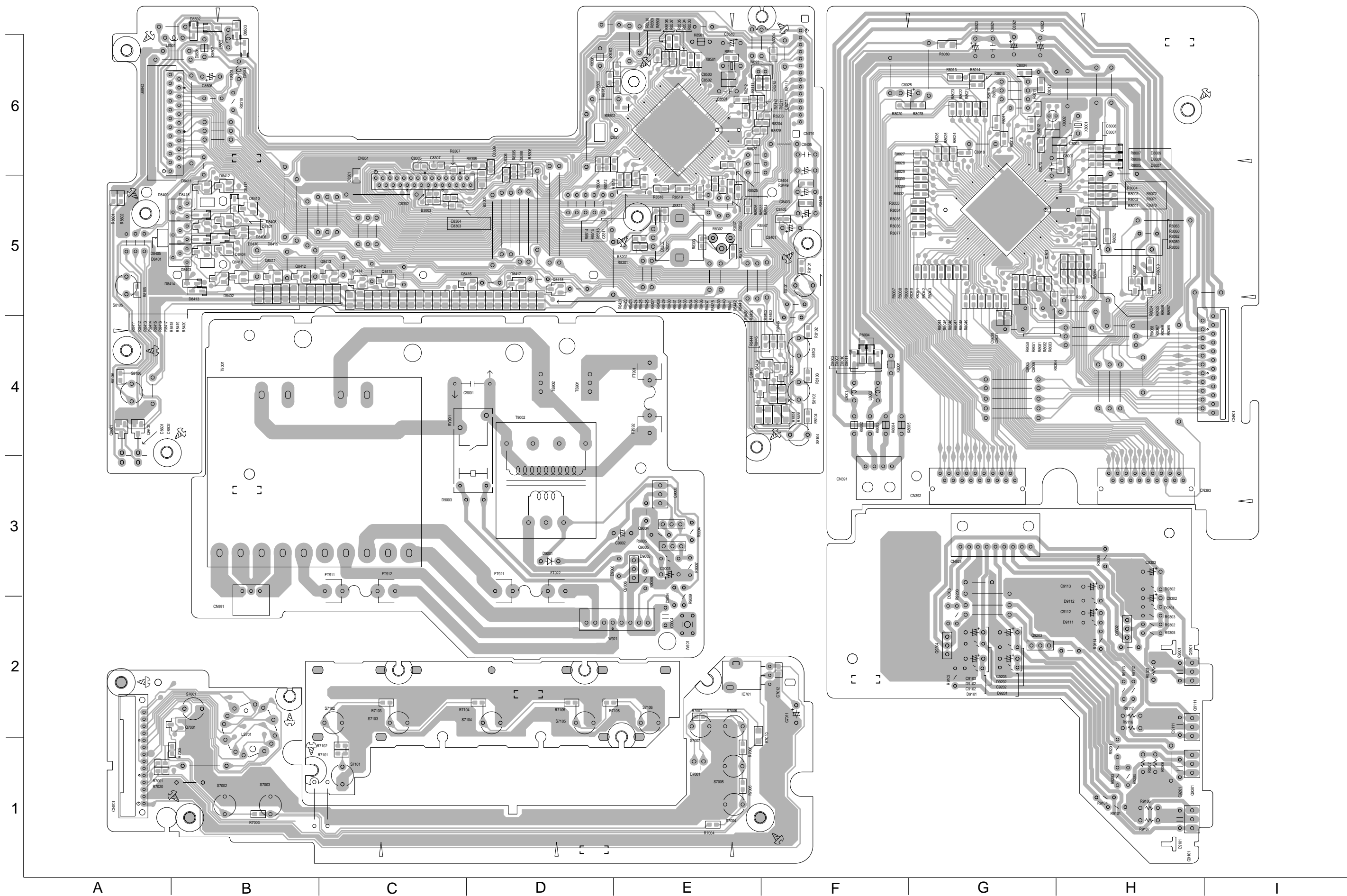
- NOTES
1. VOLTAGES ARE DC-MEASURED WITH A DIGITAL VOLT METER
CONDITION: MODE 'DISC1 STOP (x1 SPEED MODE)
 2. UNLESS OTHERWISE SPECIFIED,
ALL RESISTOR ARE 1/10W ± 5% METAL GLAZE RESISTOR.
ALL CAPACITORS ARE 50V CERAMIC CAPACITOR.
ALL RESISTANCE VALUES ARE IN OHM (Ω).
ALL CAPACITANCE VALUES ARE IN nF (pF).
ALL INDUCTANCE VALUES ARE IN μH.
ALL E-CAPACITORS ARE SHOWN IN THE FORM OF CAPACITANCE (μF) / RATED VOLTAGE (V).
 3. DIGI Tr

CD PLAYBACK SIGNAL

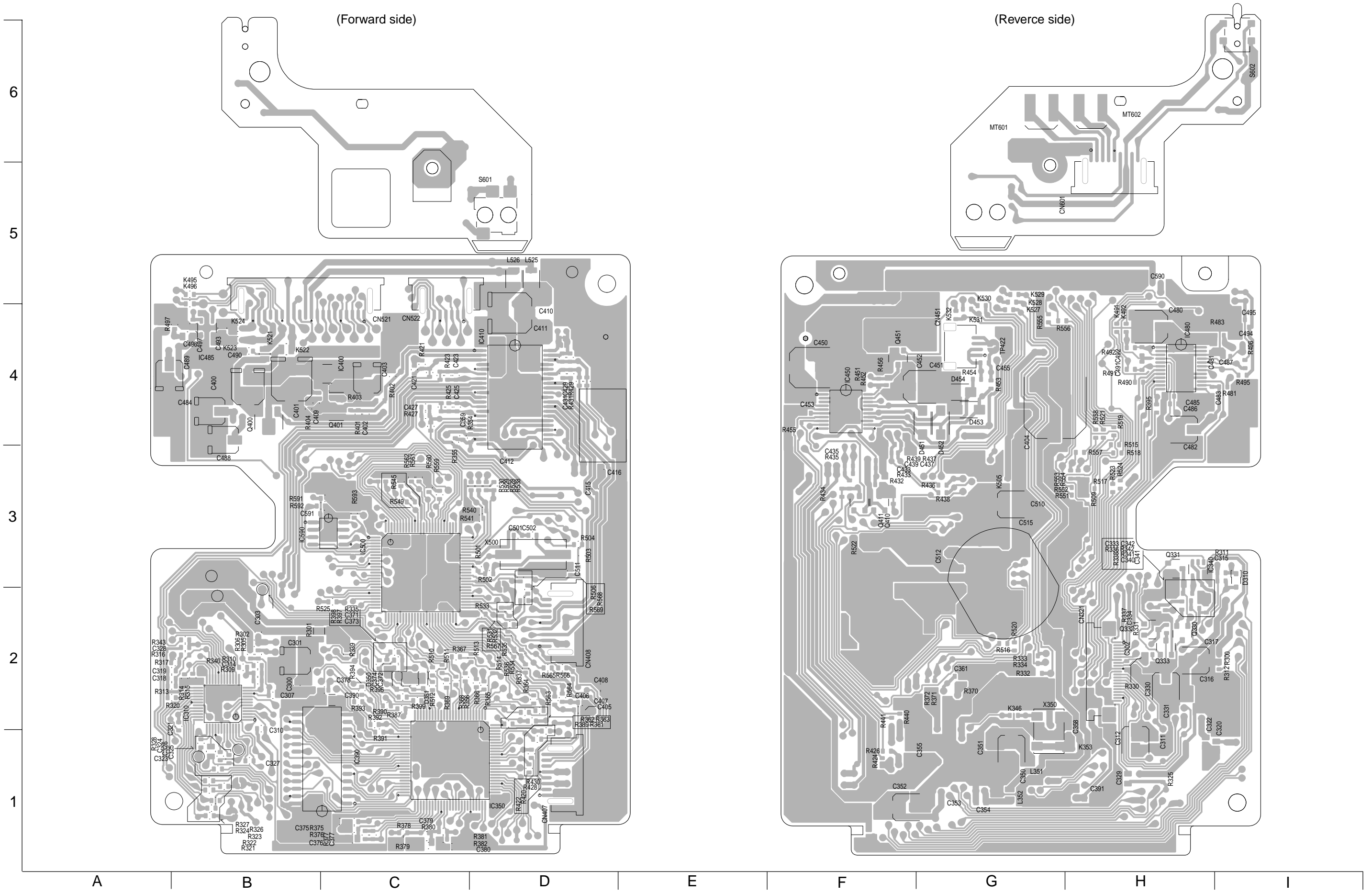
MD servo control section



■ Micon board

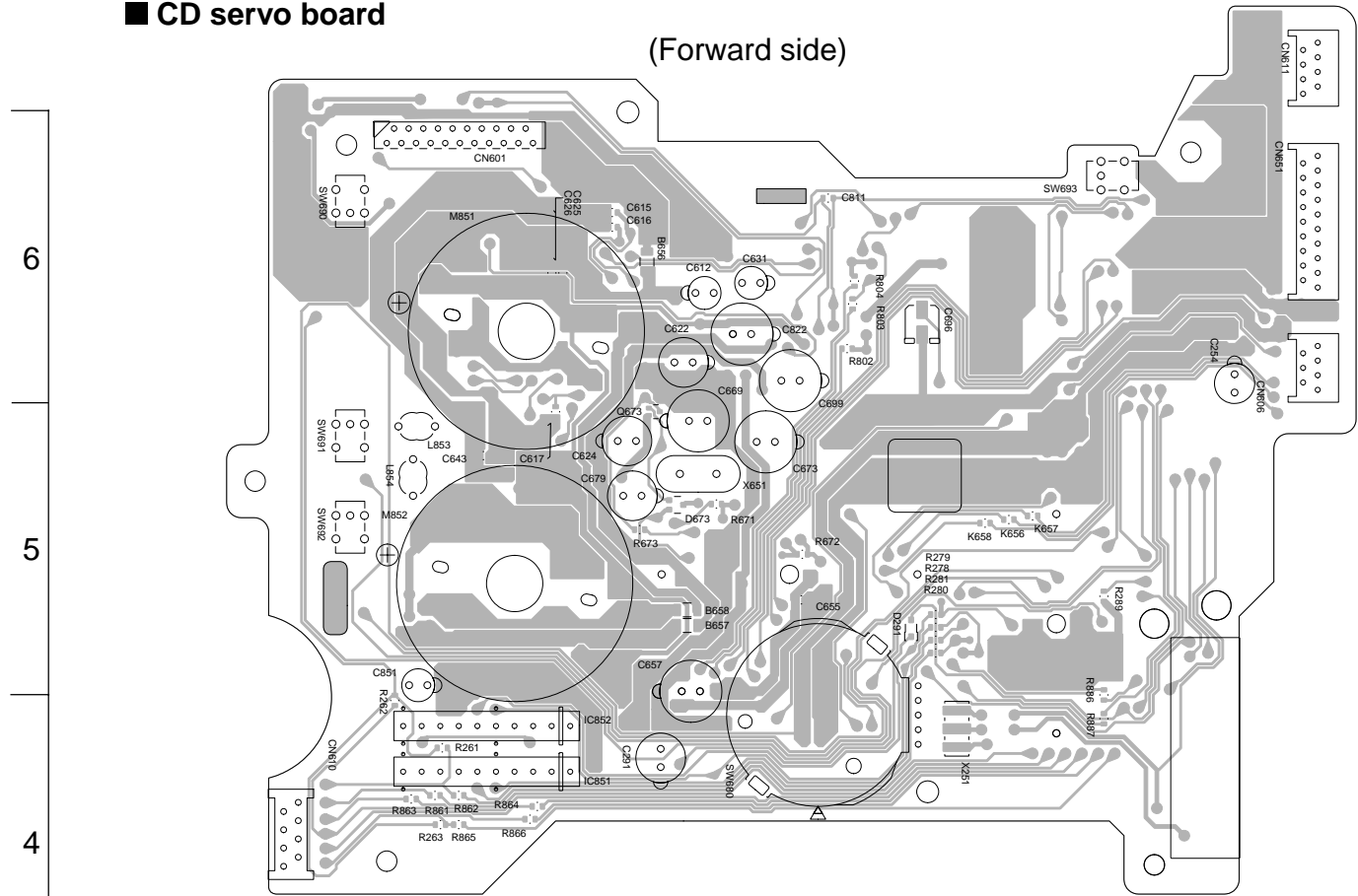


■ MD servo board

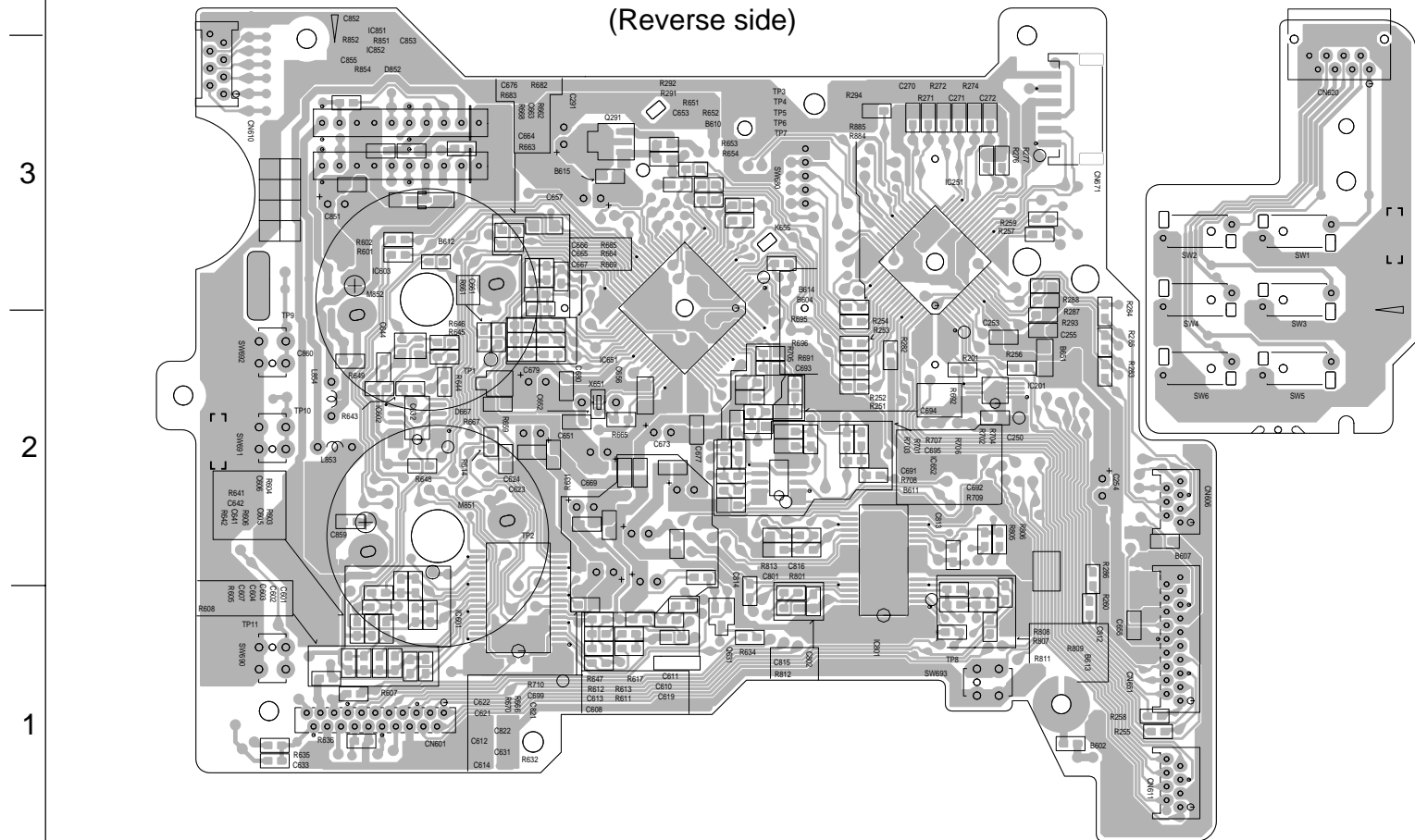


■ CD servo board

(Forward side)



(Reverse side)



■ Tuner board

